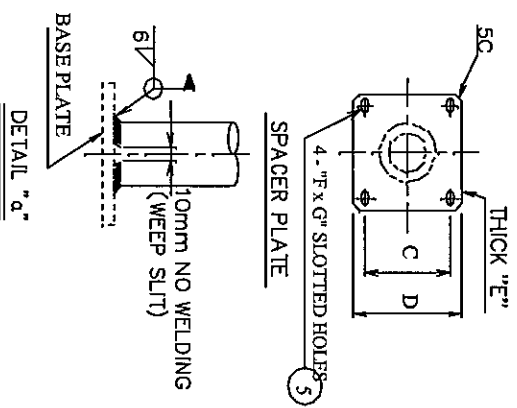
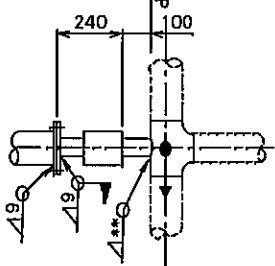
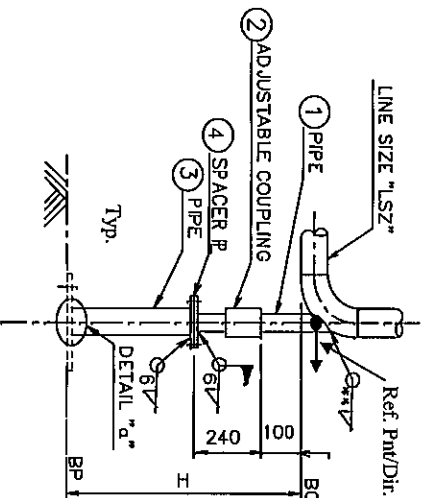


PIPE SUPPORT STANDARD

TYPE : **SEBAP** Stanchion on Elbow; Sliding w/bolt, Adjustable, Pipe Type
STBAP Stanchion on Tee, Sliding w/bolt, Adjustable, Pipe Type

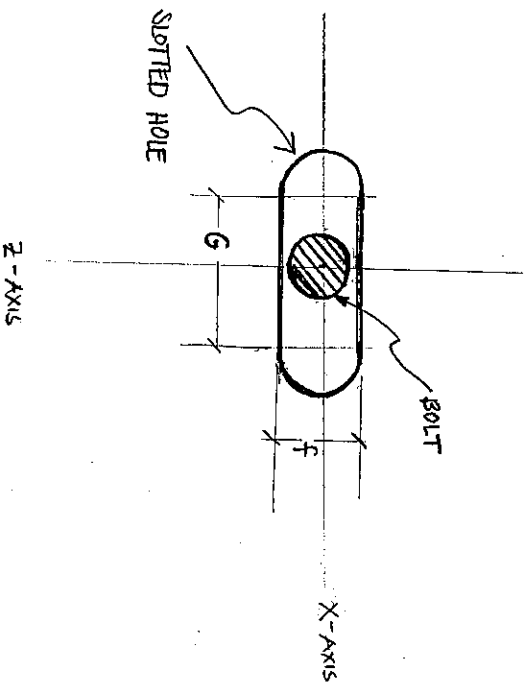
** : same with pipe thk.



Applicable Base/Anchor Type : "A", "C", "W"
 Applicable Material Code : "1", "2", "3"
 Applicable Insulation Type : "H", "p", "N", "T"
 Max. Insulation Thickness : 80 mm

Selection to Line Size

Line Size	Applicable Cond.	Pipe Size A	Pipe Size B
1.1/2		1	By Cal
2		1.1/2	By Cal
3		2	By Cal
4		3	By Cal
5		4	By Cal
6	Applicable Cond.	4	By Cal
8	for Selected Size B	6	By Cal
10	to apply.	6	By Cal
12		6	By Cal
14		8	By Cal
16		8	By Cal
18		10	By Cal
20		10	By Cal
24		14	By Cal
26		14	By Cal



Available Selection

Pipe Size B	Applicable Cond.		Dimension			F X G	B/N Size for Spacer Plate
	Max H	Min H	C	D	E		
1	2500	440	80	130	6	14 X 22	M12 X 35L W/WASHER
1.1/2	2500	440	80	130	6	14 X 22	M12 X 35L W/WASHER
2	2500	440	80	130	6	14 X 22	M12 X 35L W/WASHER
3	2500	440	100	160	9	19 X 30	M16 X 40L W/WASHER
4	2500	440	130	190	9	19 X 30	M16 X 40L W/WASHER
6	2500	440	180	240	9	19 X 30	M16 X 40L W/WASHER
8	2500	440	220	300	12	22 X 40	M20 X 55L W/WASHER
10	2500	440	270	350	12	22 X 40	M20 X 55L W/WASHER
12	2500	440	320	400	12	22 X 40	M20 X 55L W/WASHER
14	2500	440	350	450	12	22 X 40	M20 X 55L W/WASHER
16	2500	440	400	500	16	22 X 40	M20 X 55L W/WASHER
18	2500	440	450	550	16	22 X 40	M20 X 55L W/WASHER
20	2500	440	500	650	19	29 X 49	M24 X 70L W/WASHER
24	2500	440	550	700	19	29 X 49	M24 X 70L W/WASHER