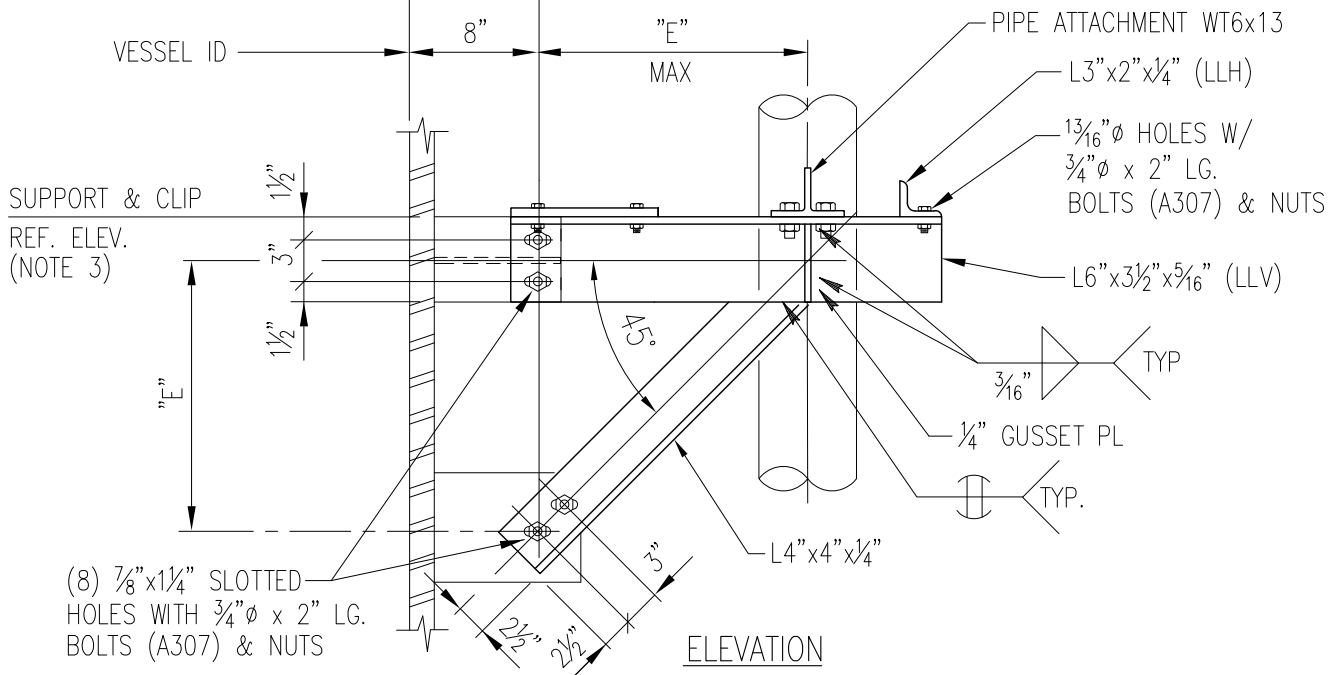
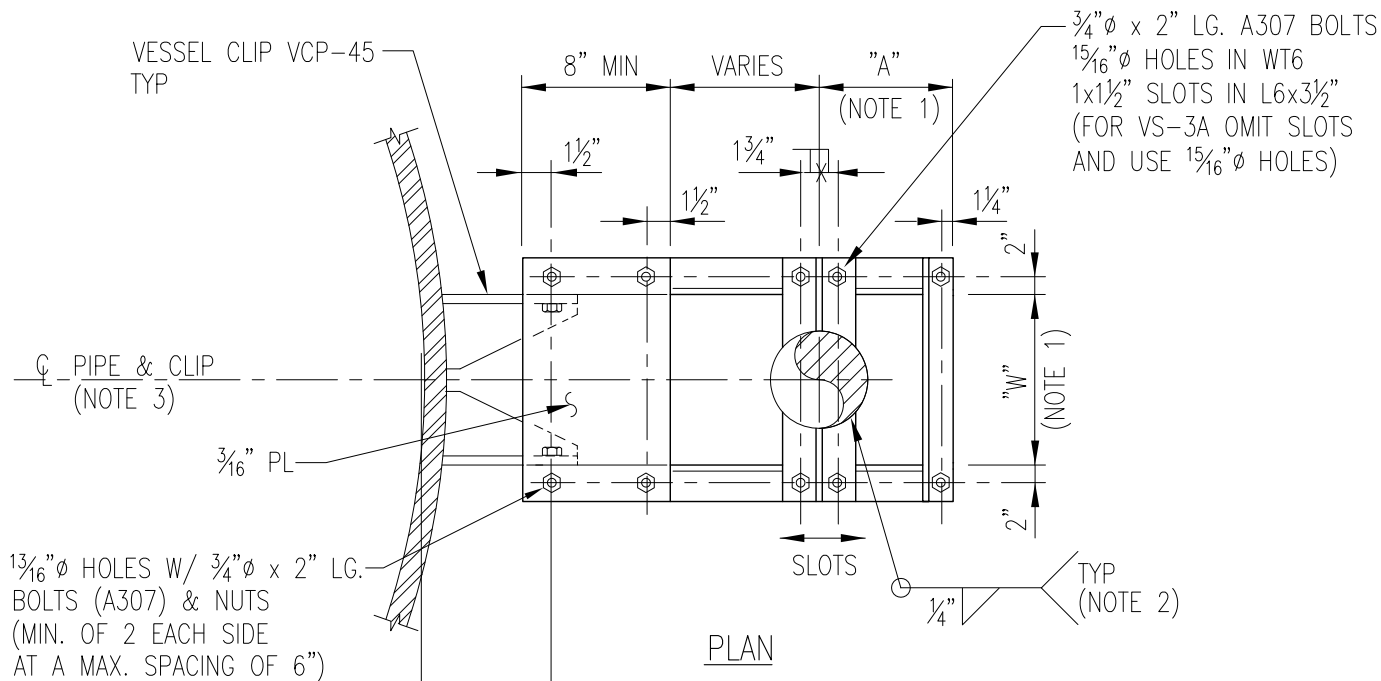


PIPING STANDARD DETAIL

PIPE SUPPORT TYPE VS-3 & VS-3A

FOR 6" THRU 12" PIPES



VS-3 SUPPORT VS-3A ANCHOR

- NOTES:
- DIMENSIONS WILL ACCOMMODATE A MAXIMUM INSULATION THICK. OF 4".
 - PLATE OR WT MAY BE FIELD OR SHOP FABRICATED. AND INSTALLED. PLATE OR WT TO BE SAME MATERIAL. AS VESSEL OR PIPE TO WHICH IT ATTACHES AND STRESS RELIEVED AFTER WELDING IF REQUIRED.
 - CLIP ORIENTATION & REFERENCE ELEVATION LINE TO BE SHOWN ON PIPING & VESSEL DRAWINGS.

PIPE SIZE	"A"	"W"	"E" MAX	MAX. LOAD VERTICAL	MAX. LOAD LATERAL
6"	10 1/2"	1'-3"	2'-0"	1600 LBS	1800 LBS
8"	11 1/2"	1'-5"	2'-6"	2500 LBS	1800 LBS
10"	1'-0 1/2"	1'-7"	2'-6"	2500 LBS	1800 LBS
12"	1'-1 1/2"	1'-9"	2'-6"	2700 LBS	1800 LBS